



Realtors • Auctioneers • Advisors

AUCTION

LEADING THE INDUSTRY SINCE 1945

WEDNESDAY – SEPTEMBER 23, 2020 – 1:00 PM

36 Acres Prime Development Land
STARK COUNTY - JACKSON TOWNSHIP – JACKSON LSD

On-site and Online Bidding Available

ABSOLUTE AUCTION, all sells to the highest bidder. Location:

**Corner of Roanoake St. NW and Bramblebush Ave.,
NW, Canton, OH 44708**

Directions: Take 12th St. west of Perry Dr. to Brunnerdale, go north to Briardale Dr. NW, go west to Roanoake and west to auctions.
Watch for KIKO signs.

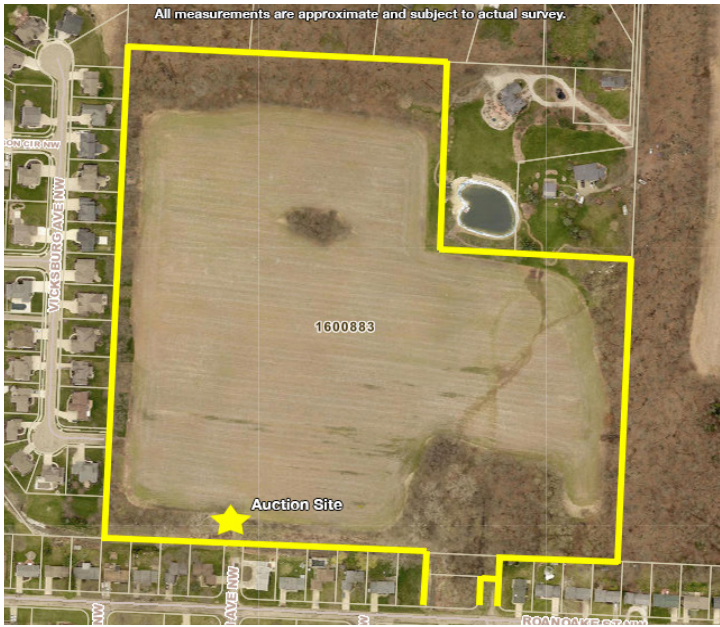


Mostly open tillable land with trees around edges. Main parcel #1600883, Jackson Twp. Plus, 3 small lots for better access to sell with (parcels #10011882, #4311177, & #4311176 Perry Twp.) Streets that stub into this parcel are Briardale, Bramblebush, & Vicksburg. Utilities available near street stubs. Sells as entirety. Land lays real nice. Ideal development parcel.

Information is believed to be accurate but not guaranteed. KIKO Auctioneers

800-533-5456 | kikoauctions.com





TERMS ON REAL ESTATE: 10% down auction day, balance due at closing. A 10% buyer's premium will be added to the highest bid to establish the purchase price. Any desired inspections must be made prior to bidding. Information is believed to be accurate but not guaranteed. Property to be sold as an entirety and not to be offered in separate parcels.

AUCTION BY ORDER OF: Hillsdale Investment Corp.



Auctioneer/Realtor®
MATTHEW P. KIKO AARE
 330-327-9617
 mattkiko@kikocompany.com

800-533-5456 | kikoauctions.com

